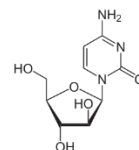
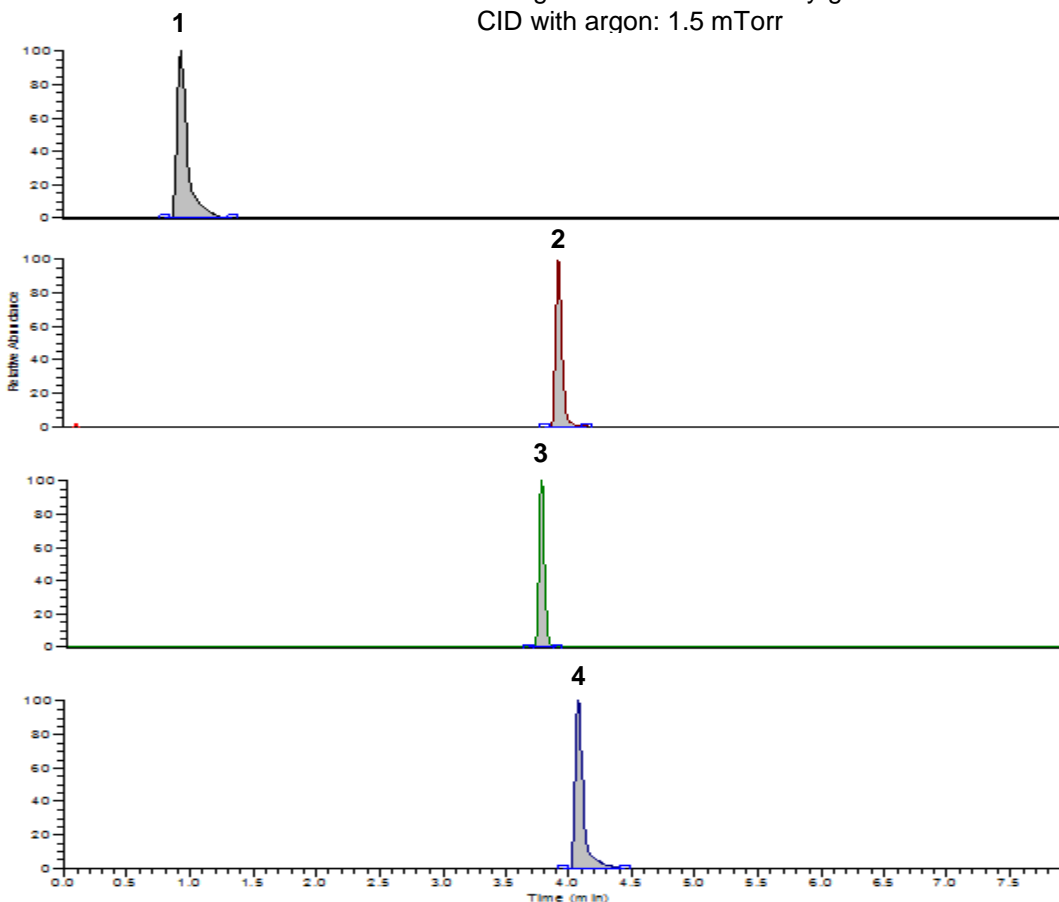


## Conditions

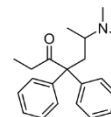
Column: ACE UltraCore 2.5 SuperC18  
Dimensions: 100 x 2.1 mm  
Part Number: CORE-25A-1002U  
Mobile Phase: A: 0.1% formic acid in H<sub>2</sub>O  
B: 0.1% formic acid in MeCN

Time (mins)	%B
0.0	2
1.0	2
3.0	80
5.0	80
5.1	2
8.0	2

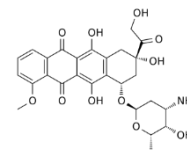
Flow Rate: 0.25 mL/min  
Detection: Thermo Vantage triple quadrupole MS  
MRM +ve ESI mode  
Spray voltage: 3500 V  
Nitrogen sheath and auxiliary gas  
CID with argon: 1.5 mTorr



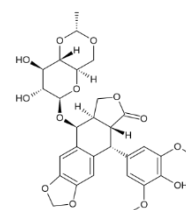
1. AraC  
(*m/z* 244.1 → 112.2)



2. Methadone  
(*m/z* 310.2 → 265.3)



3. Doxorubicin  
(*m/z* 544.2 → 361.2)



4. Etoposide  
(*m/z* 589.2 → 185.1)