

# Ethyl Glucuronide in Water by LC-MS/MS

**ACE**<sup>®</sup>  
Ultra-inert  
UHPLC & HPLC Columns

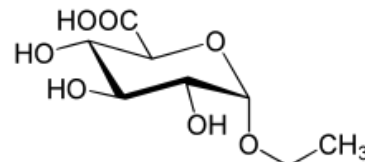
Application #AN1100

## Conditions

Column: ACE Excel 2 C18-PFP  
Dimensions: 100 x 2.1 mm  
Part Number: EXL-1010-1002U  
Mobile Phase: A: 0.05% formic acid in H<sub>2</sub>O  
B: MeOH

Time (mins)	%B
0.00	5
4.00	70
6.00	95
7.00	95
7.01	5

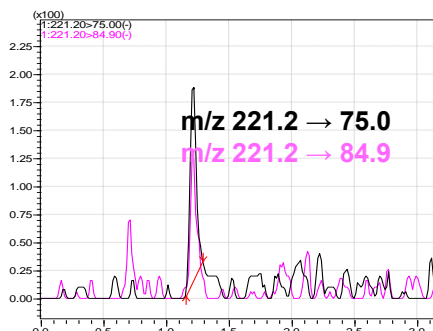
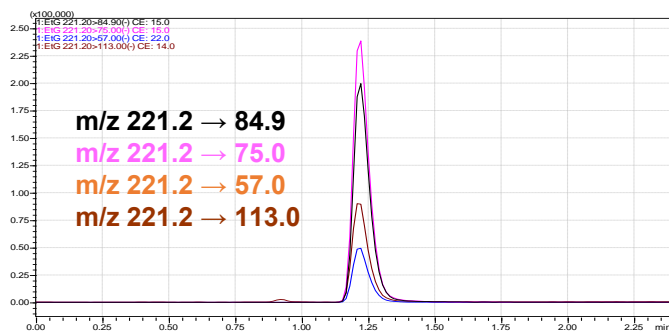
Flow Rate: 0.4 mL/min  
Injection: 3 µL  
Temperature: 40 °C  
Detection: Shimadzu LCMS-8050  
ESI voltage: -3 kV  
Desolvation line: 250 °C  
Interface heater: 380 °C  
Nebulizing gas: 3 L/min  
Heat block: 400 °C



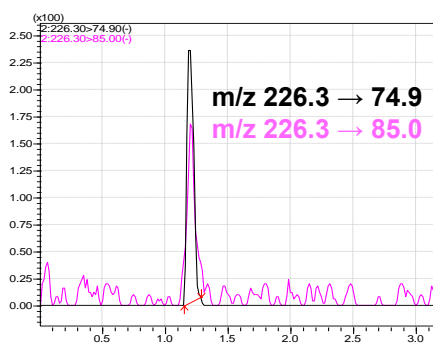
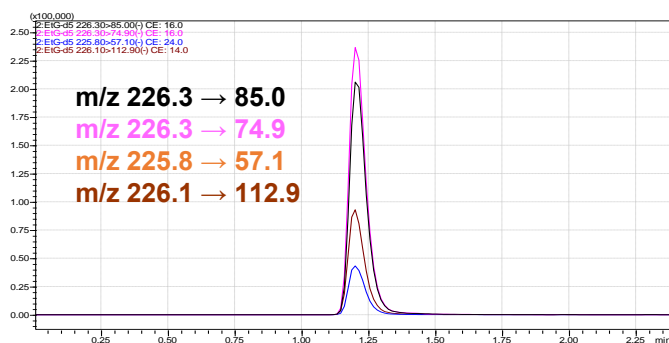
Ethyl glucuronide

## Ethyl glucuronide (EtG)

LOQ in H<sub>2</sub>O 300 fg on-column



## Ethyl glucuronide-d5 (EtG-d5)



Reproduced with permission of Shimadzu Europa GmbH. Analysed on Shimadzu Nexera X2

© 2015 ACT Ltd. All rights reserved. All products are available worldwide.



For more information contact your local ACE distributor or visit  
[www.ace-hplc.com](http://www.ace-hplc.com) or email: [info@ace-hplc.com](mailto:info@ace-hplc.com)

**ACE**<sup>®</sup>  
UHPLC & HPLC  
Columns