

Hydroxychloroquine in Whole (EDTA) Blood by LC-MS/MS

Application #AN1120

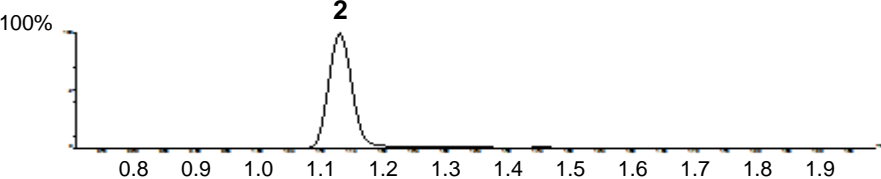
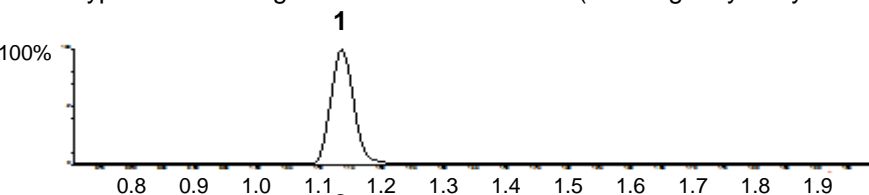
Conditions

Column: ACE Excel 2 SuperC18
Dimensions: 50 x 2.1 mm
Part Number: EXL-1011-0502U
Mobile Phase: A: 0.5% Ammonium hydroxide pH 10 in H₂O
B: 0.5% Ammonium hydroxide in MeCN

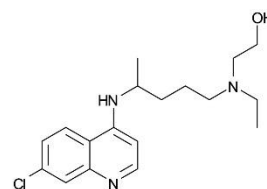
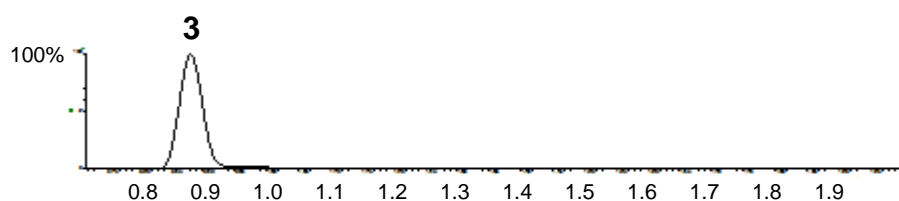
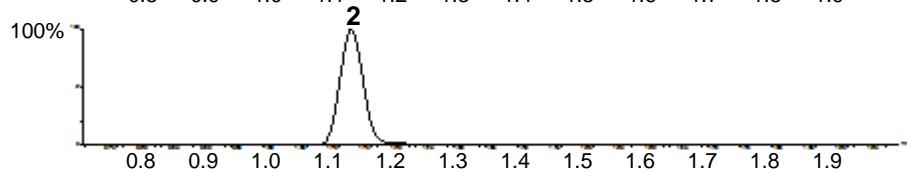
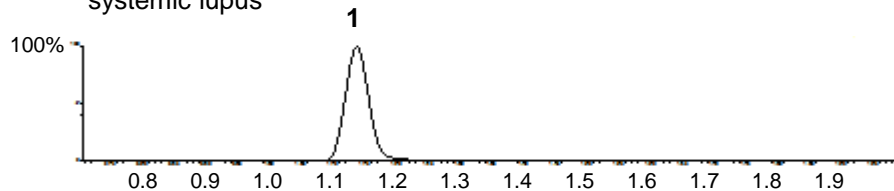
Time (mins)	%B
0.00	30
1.50	100
2.50	100
2.51	30

Flow Rate: 0.4 mL/min
Injection: 5 µL
Temperature: 40 °C
Detection: MS/MS detection with Waters TQD
ESI +ve ion mode

Typical chromatogram for lowest calibrator (0.09 mg/L hydroxychloroquine)



Typical chromatogram for whole (EDTA) blood samples from patient with systemic lupus



1. Hydroxychloroquine
(*m/z* 336 → 247)
2. D4-Hydroxychloroquine (IS)
(*m/z* 340 → 251)
3. Desethylhydroxychloroquine
(*m/z* 308 → 247)

Reproduced with permission of Leslie Brent Laboratory, Hammersmith Hospital, London, UK
© 2015 ACT Ltd. All rights reserved. All products are available worldwide.